



Measurably better value

Connecting over LAN with NI-VISA

```
... else
... "OR_2"
... False
... = False
... x = True
... at the end -add
... ct= 1
... select=1
... .scene.objects.active
... "selected" + str(modifier)
... or_ob.select = 0
... py.context.selected_object
... data.objects[one.name].select
... print("please select exactly
... OPERATOR CLASSES -----
... types.Operator):
... X mirror to the selected
... one mirror_x"
```

Application Note
82110-0160-01

Products:

TTi instruments with a LAN port.

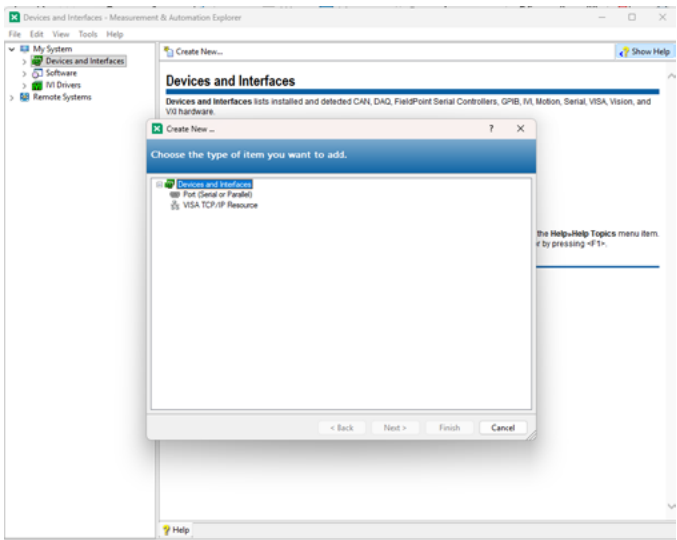
Instructions

NI-VISA is a National Instruments driver for the implementation of the Virtual Instrument Software Architecture (VISA) I/O standard - a standard for configuring, programming, and troubleshooting instrumentation systems via Ethernet/LXI, USB, GPIB, or serial (RS232/RS485) interfaces.

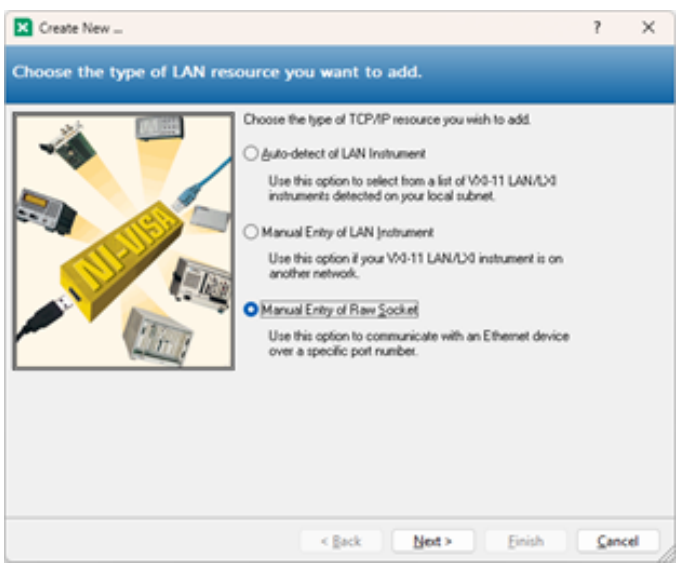
Talking to a TTI instrument using VISA must be done directly to a raw socket, you end up with a VISA resource name like "TCPIP0::10.0.0.244::5025::SOCKET" where 10.0.0.244 is the IP address of the instrument and 5025 is the port number for the instrument.

To create a LAN/TCP-IP VISA connection in NI-MAX to a TTI instrument, follow the following steps:

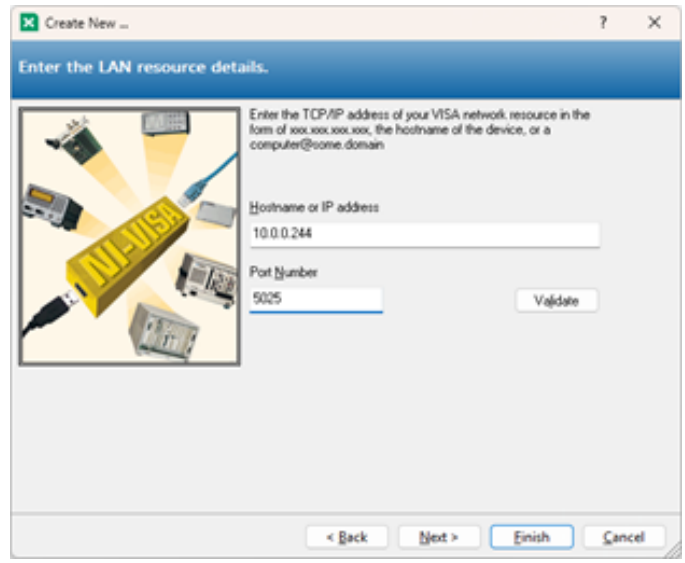
1. Open "NI MAX"
2. Right click "Network Devices" and select "Create new VISA TCP/IP Resource..."



3. Select "Manual Entry of Raw Socket" and click "Next"



4. Enter the IP address or hostname of the instrument and port number (TTI instruments use 9221 or 5025, this is defined in the instruments manual).
5. Click "Validate"



6. If the result passes the test click "Finish" to create the resource.

